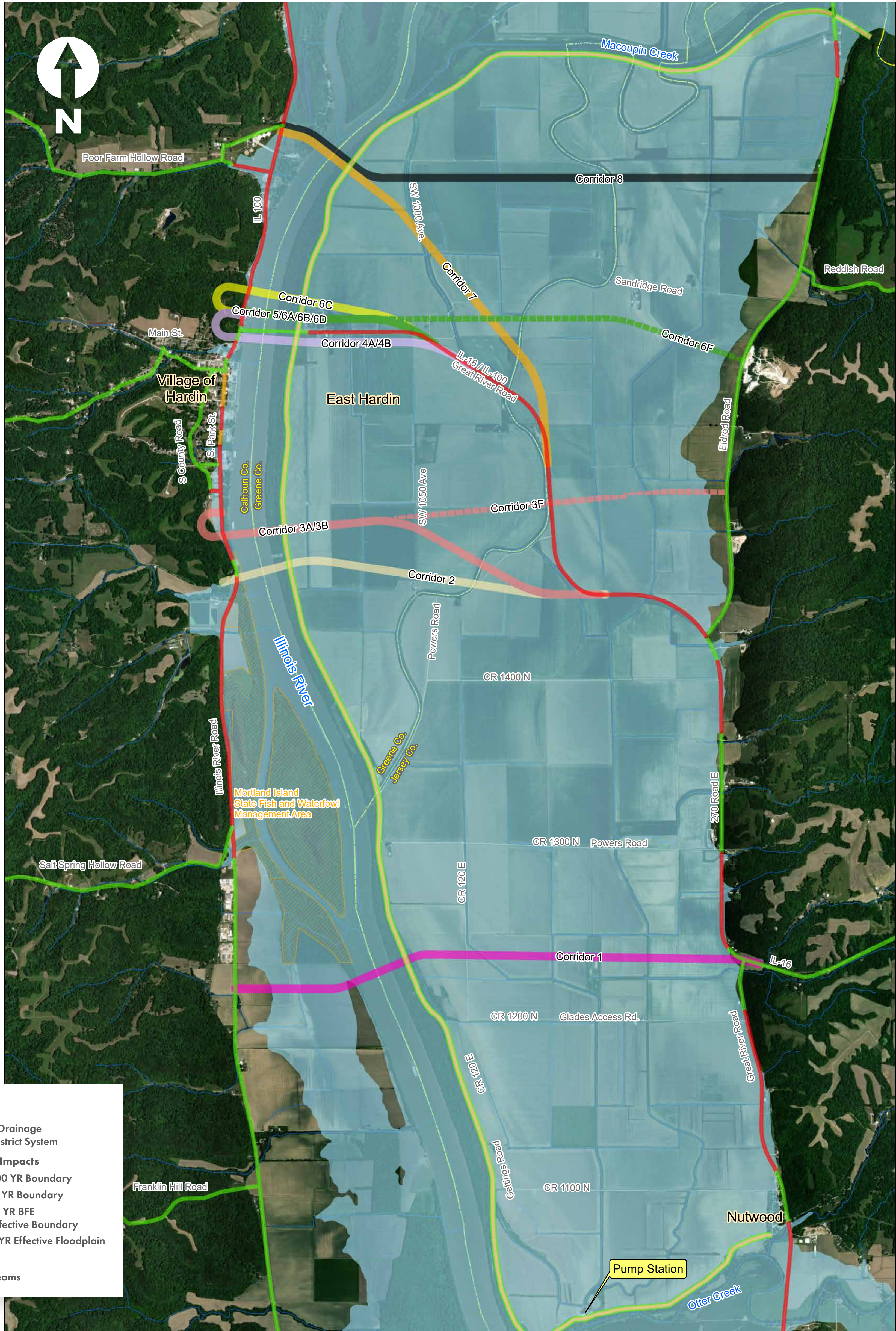


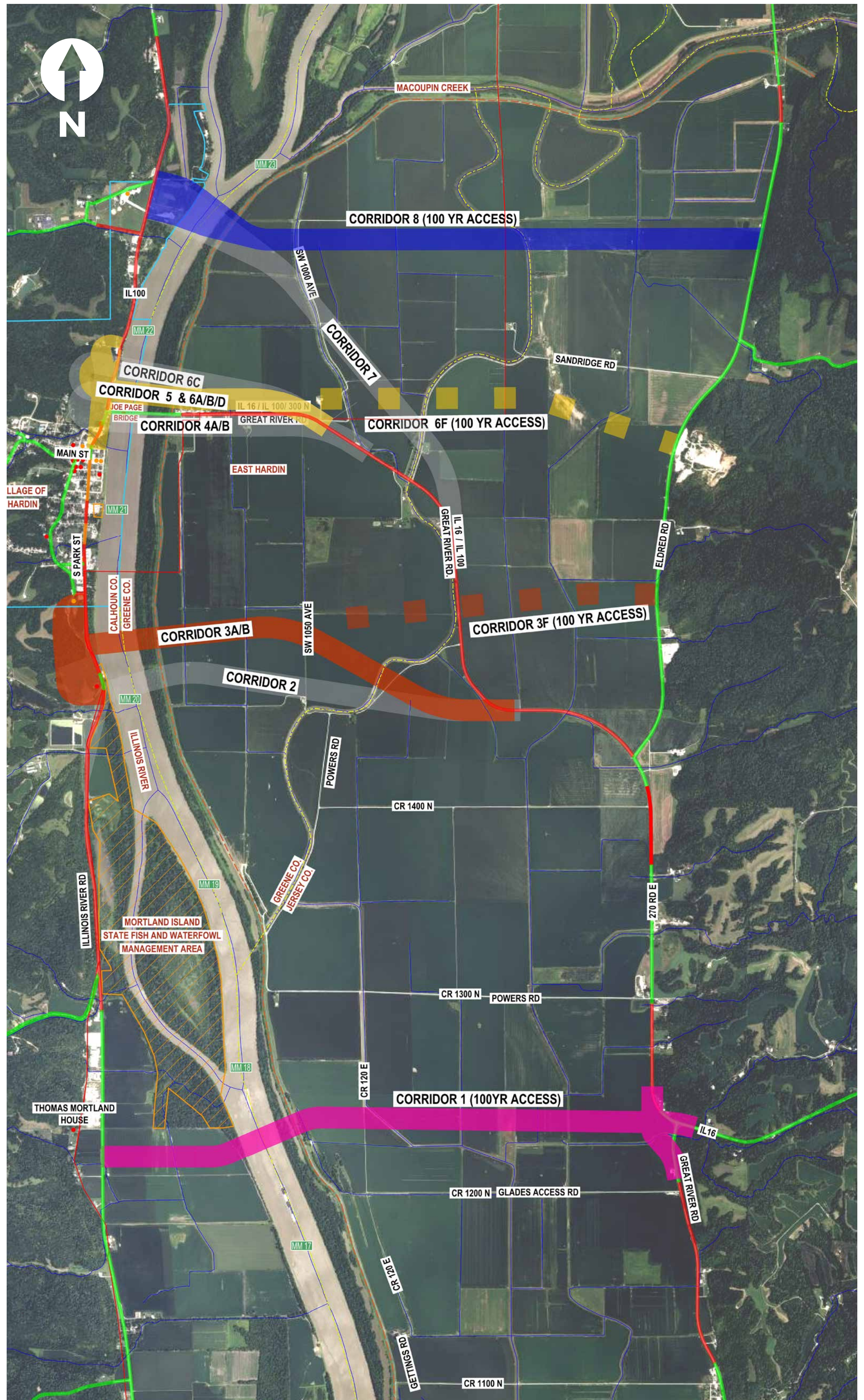
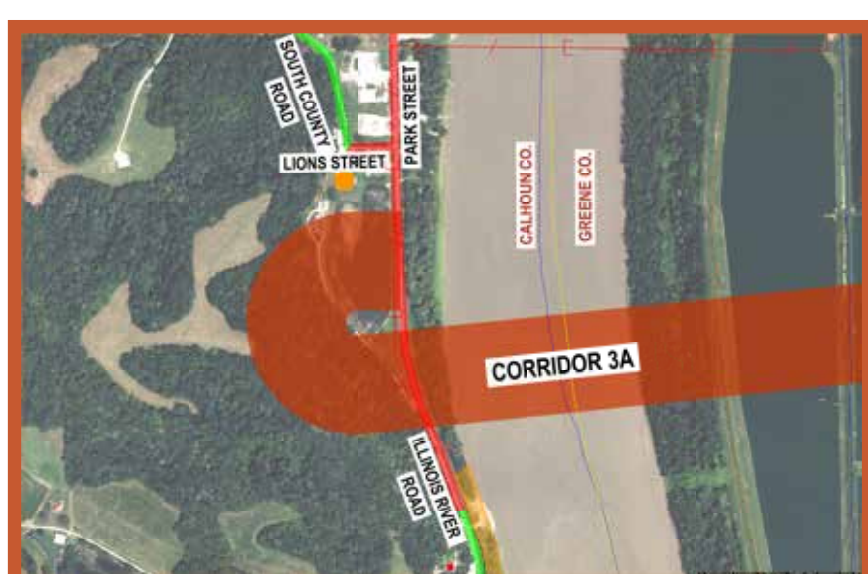
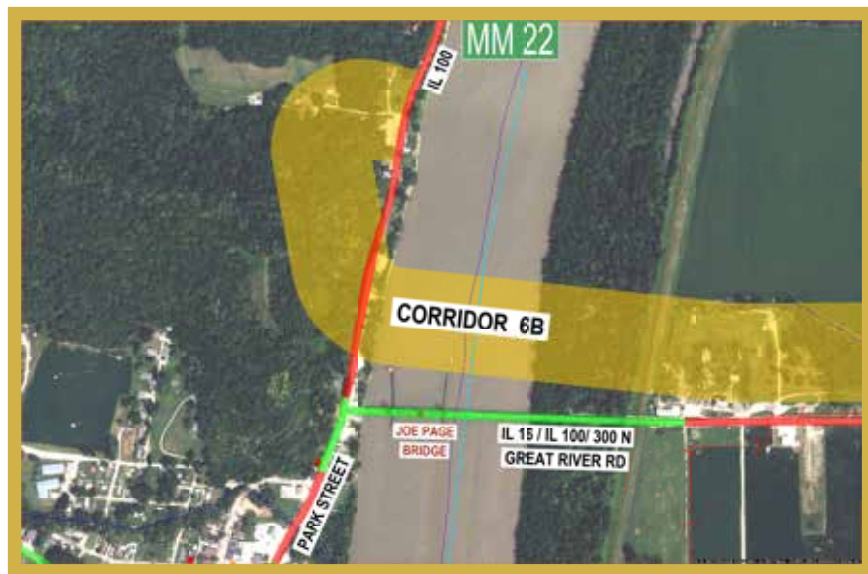
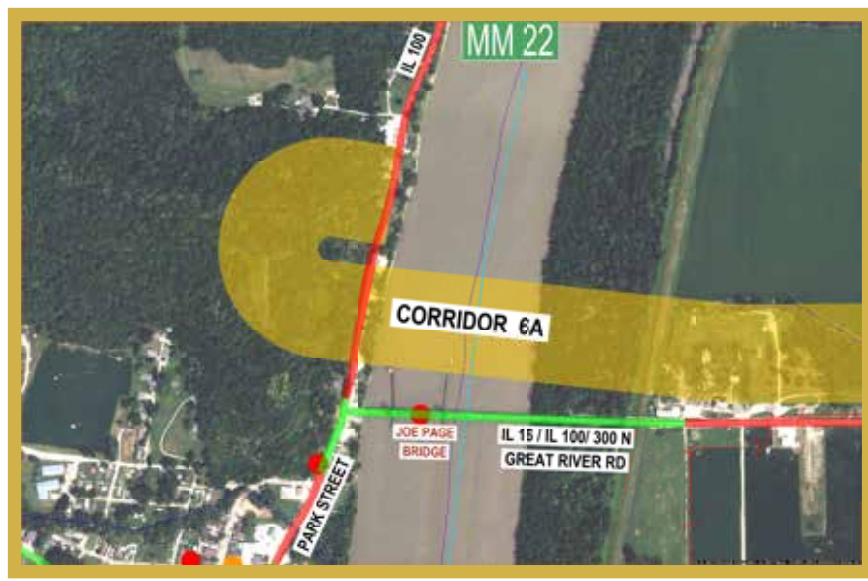
Based on comments received, new corridor variations have been added to provide access to the bridge during a 100-year flood event. This is depicted in the corridors with a dashed line.



100-year Flood Plain

This map shows the roadway impacts during 100-year flood events.





LEGEND

- Nutwood Levee
- County Line
- City Limits
- Park and Waterfowl Area Limits
- Transmission Lines
- NWI Wetland
- Potentially Eligible Historic Property
- Public Service
- River Mile Marker

Existing Roadway Impacts

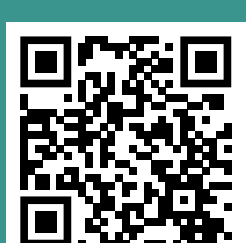
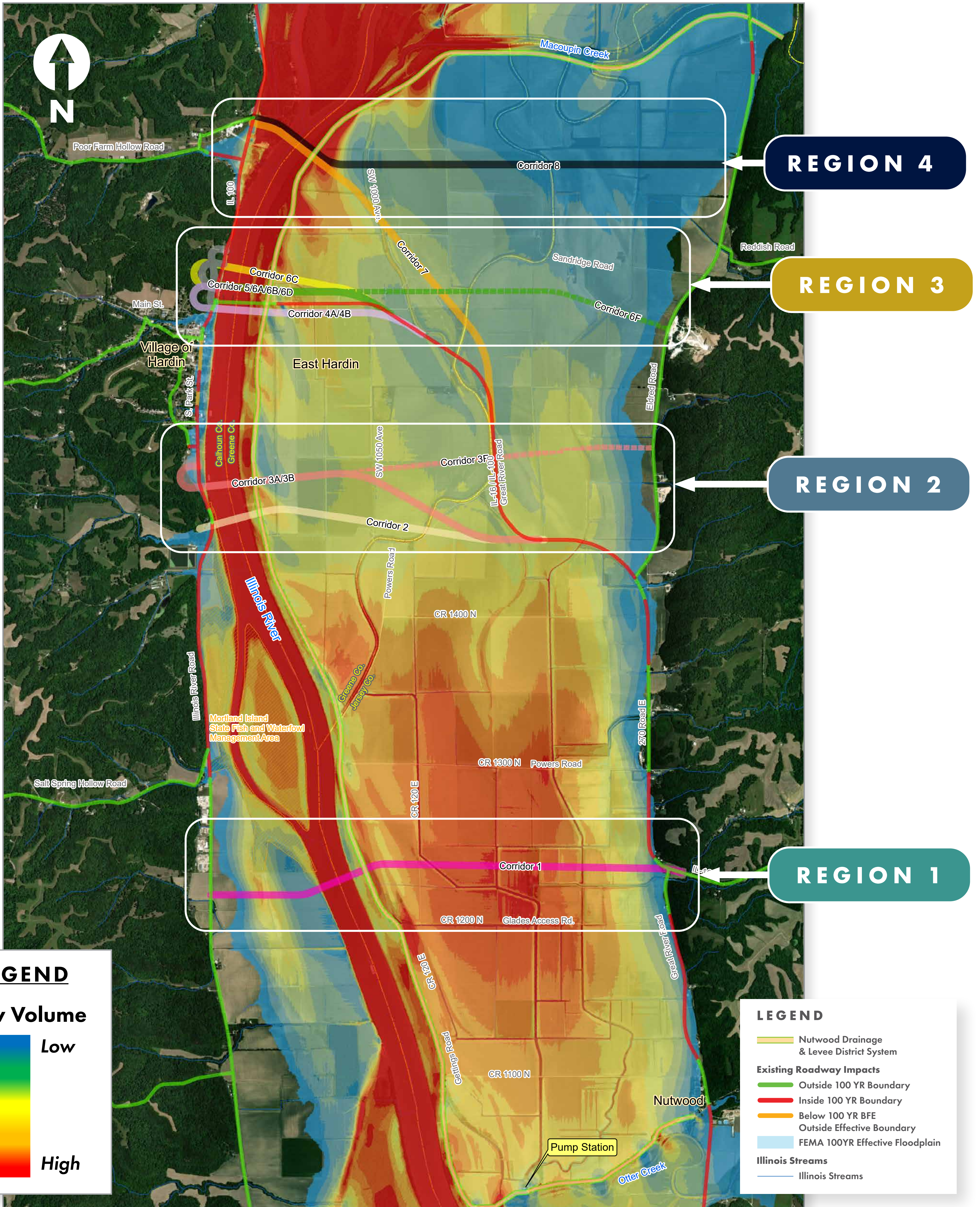
- Outside 100 YR Boundary
- Inside 100 YR Boundary
- Below 100 YR BFE Outside Effective Boundary

Corridors are 600-800 feet wide. Dashed corridor lines are a variation to provide 100-year flood access.



100-year Flood Plain River Flow

This map shows the Corridors divided into 4 river flow regions for additional study. River flow increases from north to south.



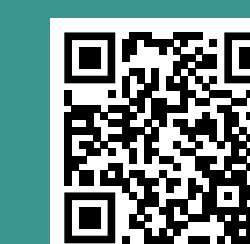
	No-Build	Rehabilitation
Meets Purpose and Need	✗	✗
Roadway Geometrics	✓	✓
Permanent Traffic Configuration	✓	✓
Roadway Cross Section	✗	✗
Maintenance of Traffic During Construction	✓	✗
Environmental Impacts	✓	✓
River Impacts	✗	✗
Construction Cost	?	?
Annual Operation/Maintenance Cost	✗	✗
Public Involvement	?	?

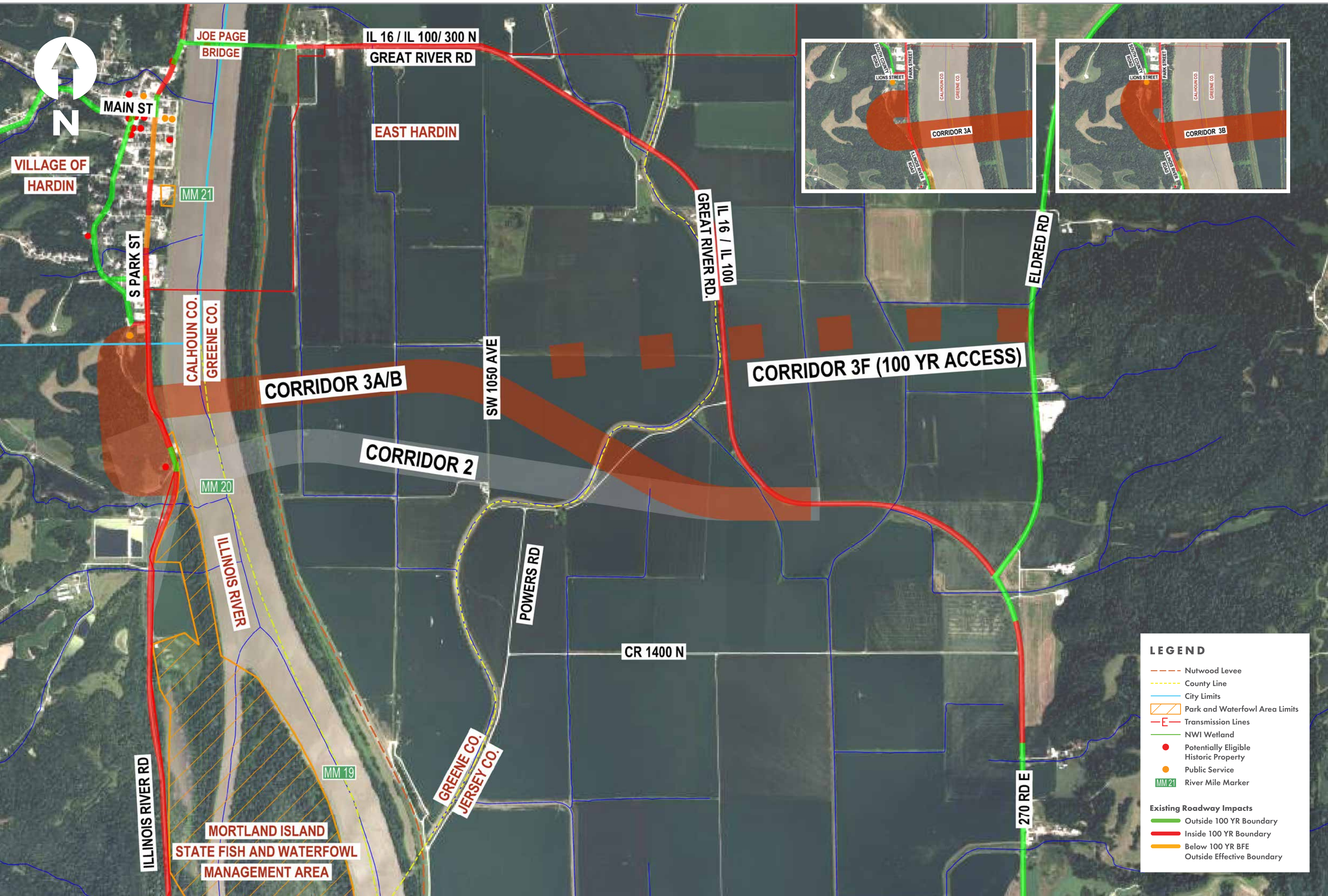
Corridor Evaluation Criteria

- ✓ Desirable
- ✗ Undesirable
- Satisfactory
- ? To Be Determined

Carried Foward

NOT Carried Foward





	Cor2	Cor 3A	Cor3B
Meets Purpose and Need	✓	✓	✓
Roadway Geometrics	✓	✓	✓
Permanent Traffic Configuration	✓	✓	✓
Roadway Cross Section	✓	✓	✓
Maintenance of Traffic During Construction	✓	✓	✓
Environmental Impacts	✗	●	●
River Impacts	●	●	●
Construction Cost	✓	✓	✓
Annual Operation/Maintenance Cost	✓	✓	✓
Public Involvement	?	?	?
	NOT Carried Forward	Carried Forward	

✓ Desirable ✗ Undesirable
 ● Satisfactory ? To Be Determined

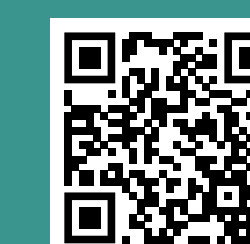
CORRIDOR 2

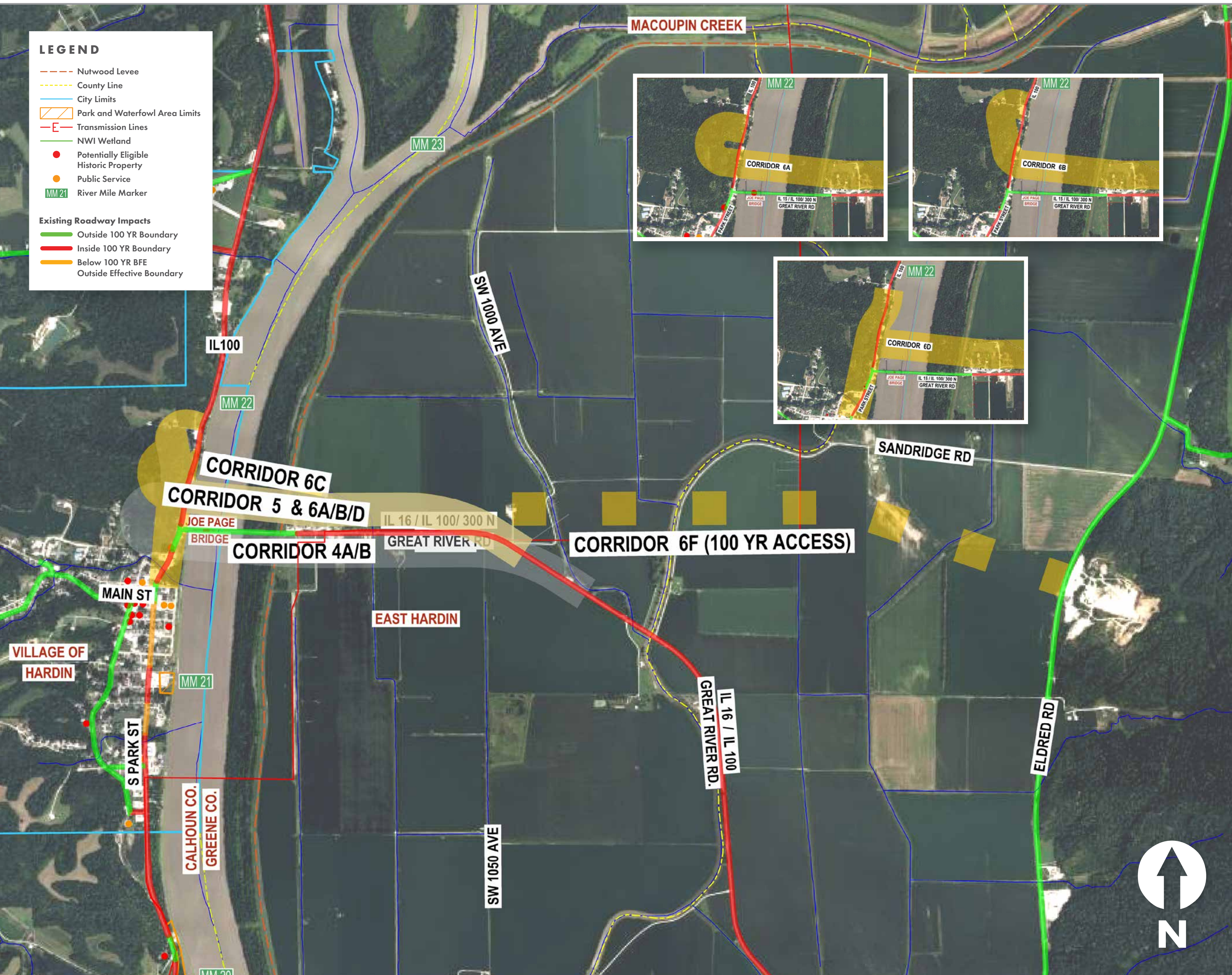
- Close proximity to potential historic site
- Impacts Mortland Island Management Area

CORRIDOR 3A/3B/3F

- Avoids potential historic site
- Avoids Mortland Island
- Lower construction cost
- Lower impact to bluff and reduced rock excavation
- **Access during 100-year flood event to be studied**

Dashed corridor lines are a second option for corridor alignment.





	Cor 4A	Cor 4B	Cor 5	Cor 6A	Cor 6B	Cor 6C	Cor 6D
Meets Purpose and Need	✓	✓	✓	✓	✓	✓	✓
Roadway Geometrics	✓	✓	✓	✓	✓	✓	✓
Permanent Traffic Configuration	✓	✓	✓	✓	✓	✓	✓
Roadway Cross Section	✓	✓	✓	✓	✓	✓	✓
Maintenance of Traffic During Construction	●	●	●	●	●	●	●
Environmental Impacts	✗	●	●	●	●	●	●
River Impacts	●	●	✗	●	●	●	●
Construction Cost	●	✓	●	●	✓	✗	✓
Annual Operation/Maintenance Cost	✓	✓	✗	✓	✓	✓	✓
Public Involvement	?	?	?	?	?	?	?
	NOT Carried Forward			Carried Forward		NOT Carried Forward	Carried Forward

✓ Desirable ✗ Undesirable
 ● Satisfactory ? To Be Determined

CORRIDOR 4A/4B

- Close proximity to potential historic site
- High impact to bluff and significant rock excavation

CORRIDOR 5

- Requires movable bridge
- High construction, operational and maintenance costs
- Does not resolve traffic delay issues when bridge is raised

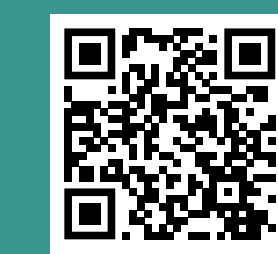
CORRIDOR 6A/6B/6C/6F

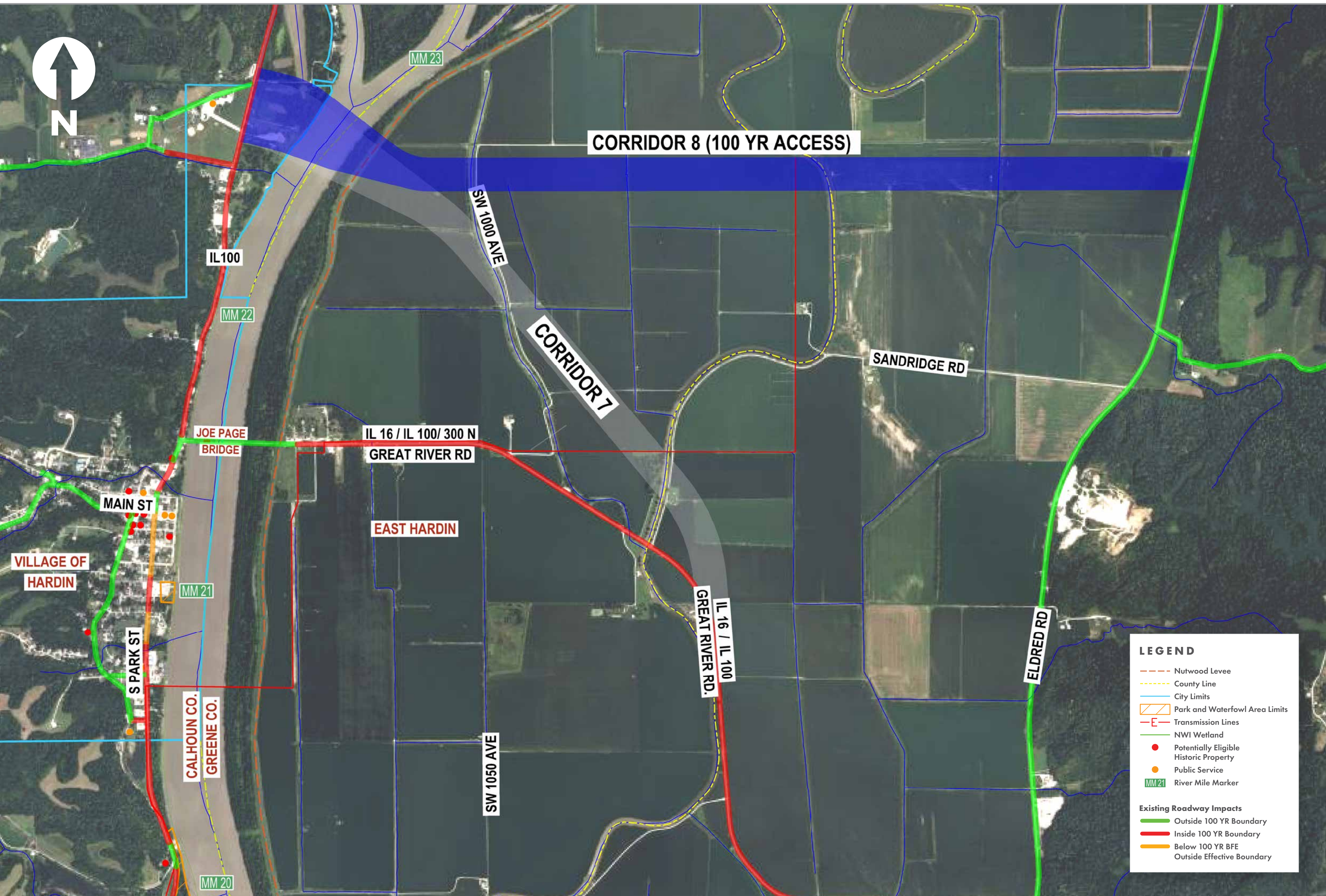
- Shorter alignments
- Lower construction cost
- Minimizes impact to bluff and rock excavation
- Located near potential historic sites but are expected to avoid sites
- Access during 100-year flood event to be studied

CORRIDOR 6C

- High impact to bluff and significant rock excavation
- Large number of upland forest parcels impacted
- High construction cost

Dashed corridor lines are a second option for corridor alignment.





	Cor 7	Cor 8
Meets Purpose and Need	✓	✓
Roadway Geometrics	✓	✓
Permanent Traffic Configuration	✓	✓
Roadway Cross Section	✓	✓
Maintenance of Traffic During Construction	●	✓
Environmental Impacts	●	●
River Impacts	●	●
Construction Cost	✓	✓
Annual Operation/Maintenance Cost	✓	✓
Public Involvement	?	?
	NOT Carried Forward	Carried Forward

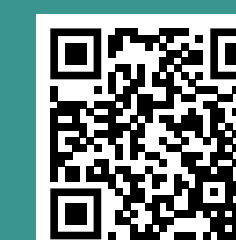
✓ Desirable ✗ Undesirable
 ● Satisfactory ? To Be Determined

CORRIDOR 7

- Requires realignment of Sandridge Road
- Does not provide access during 100-year flood event

CORRIDOR 8

- No impact to bluff
- Located in location of lower river flow
- Provides access during 100-year flood event





Recommended Corridors to Carry Forward for Further Study

			REGION 1	REGION 2			REGION 3							REGION 4	
	No-Build	Rehabilitation	Cor 1	Cor2	Cor 3A	Cor 3B	Cor 4A	Cor 4B	Cor 5	Cor 6A	Cor 6B	Cor 6C	Cor 6D	Cor 7	Cor 8
Meets Purpose and Need	✗	✗	✓	✓	✓	✓	✓	✓	✓	✓	✓	✓	✓	✓	✓
Roadway Geometrics	✓	✓	✓	✓	✓	✓	✓	✓	✓	✓	✓	✓	✓	✓	✓
Permanent Traffic Configuration	✓	✓	✓	✓	✓	✓	✓	✓	✓	✓	✓	✓	✓	✓	✓
Roadway Cross Section	✗	✗	✓	✓	✓	✓	✓	✓	✓	✓	✓	✓	✓	✓	✓
Maintenance of Traffic During Construction	✓	✗	✓	✓	✓	✓	●	●	●	●	●	●	●	●	✓
Environmental Impacts	✓	✓	●	✗	●	●	✗	●	●	●	●	●	●	●	●
River Impacts	✗	✗	●	●	●	●	●	●	✗	●	●	●	●	●	●
Construction Cost	?	?	●	✓	✓	✓	●	✓	●	●	✓	✗	✓	✓	✓
Annual Operation/Maintenance Cost	✗	✗	✓	✓	✓	✓	✓	✓	✗	✓	✓	✓	✓	✓	✓
Public Involvement	?	?	?	?	?	?	?	?	?	?	?	?	?	?	?
	Carried Foward	NOT Carried Foward	Carried Foward	NOT Carried Foward	Carried Foward			NOT Carried Foward			Carried Foward	NOT Carried Foward	Carried Foward	NOT Carried Foward	Carried Foward

✓ Desirable ● Satisfactory ✗ Undesirable ? To Be Determined

